



# Windsor Door

---

America's Choice Since 1964

## 240 COMMERCIAL DOOR



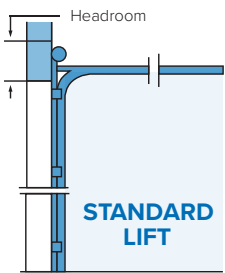
---

The Model 240 is built to take real world abuse. The 24 gauge, all steel door features primed sections with Tog-L-Loc™ construction, and is guaranteed by an unmatched 5- year warranty. Tough, reliable performance and a wide choice of options make the Model 240 an excellent door for most industrial applications.

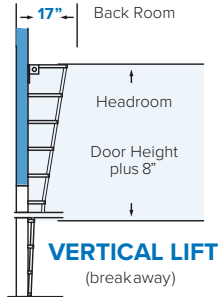
# 240 COMMERCIAL DOOR

## TRACK CLEARANCE SCHEDULE

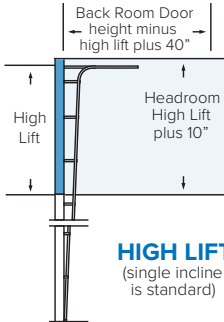
(Measurement from Header to Ceiling)	2" Track	3" Track
Standard Lift: Headroom	16"	19"
Vertical Lift: Door Height Plus	8"	8"
Hi-Lift: Hi-Lift Plus	10"	12"
Sideroom	4"	4 ¾"
Center Post Room	8"	9 ½"



Note: 5/16" fasteners recommended

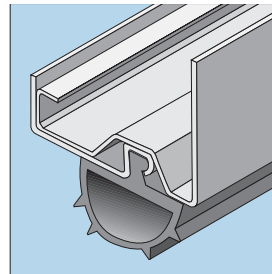


VERTICAL LIFT (breakaway)



HIGH LIFT (single incline is standard)

- 16 gauge galvanized end and intermediate styles
- 2" panel thickness
- Tongue and groove weathertight meeting rails
- Full length bottom PVC weatherstrip
- Prepainted white, 24 gauge steel (white front and back)



### FEATURES

- 16 gauge galvanized end and intermediate styles
- 2" panel thickness
- Tongue and groove weathertight meeting rails
- Full length bottom PVC weatherstrip
- Prepainted white, 24 gauge steel (white front and back)
- 24 gauge steel, hot-dipped galvanized and prepainted white, brown or almond with Ruff-Tex® finish
- Roll formed with integral reinforcing ribs - 6 longitudinal, 2 flat bottom v-grooves
- 16 gauge hot-dipped galvanized steel end and intermediate stiles
- Bottom weatherstrip is standard bulb-type
- Tog-L-Loc™ mechanical fastening system is durable, high-strength and ensures leakproof joints
- Sizes: Widths up to 24'-2", Heights up to 10'-1" Oversize available

### COUNTERBALANCE SYSTEM

- Oil-tempered helical-wound torsion springs
- Tubular or solid steel shaft as required
- Cast aluminum cable drums

### TRACK & HARDWARE

- Track is 2" or 3" (as required) hot-dipped galvanized steel
- Bracket or angle mount as required
- Vertical track is inclined to assure tight closure at jambs
- Horizontal track is reinforced with galvanized angles as required
- 14 gauge heavy-duty galvanized graduated hinges
- Rollers are steel ball bearing with case hardened races
- Lift cables are aircraft-type galvanized (minimum safety factor 5 to 1)

### LOCKS

- Inside friction lock is standard

### OPTIONS

- Pass doors (consult factory for sizes)
- Lites: 5" x 24" glass openings
- Locks: 5-pin tumbler cylinder lock; night latch with steel bar engaging track
- High lift and vertical lift
- Jamb, header and joint weatherseals
- Insulation: Polystyrene with gloss liner
- Angle mount